

The Village of Ministries

In a democracy the power rests with the people and it is dependent on participation, openness and inclusiveness. The vision is to create a remarkable meeting place for democracy designed with the highest level of sustainable responsibility for the future. A place where all people are invited, a place where people feel welcome and encouraged to meet, debate and participate in the creation of tomorrow's society. As a driver for better, stronger and more democracy the ministries quarter is transformed and renewed into The Village of Ministries. The human scale of a village brings people together. The Village creates an open, relaxed and highly efficient work environment fostering innovation, co-creation and development between the government and the people. The vision is to enhance the cooperation and potential between the public and private sector. In The Village of Ministries people work together to improve and solve day to day service and long term bigger challenges. The Village of Ministries is a democratic destination designed to be an attractive urban neighbourhood open from morning to evening. The Village of Ministries is a downscaled composition of inviting human scale pavilions and houses with boutiques and restaurants surrounded by an outdoor green city fabric of cozy informal meeting spaces, gardens and events spaces. The Village of Ministries is designed to maximize connectivity to both city and river, enhancing outdoor city life and social sustainability throughout all seasons.

Democracy is all about working together and the village is all about getting together. In the village you can learn about the work of the ministries, you can roll up your sleeves and participate in a workshop with the potential of improving the future. You can also just drop by the small boutiques or have a cup of coffee in the sun and chat with your new neighbour or colleague.

The rich diversity of functions and historical buildings is beautifully brought together by the introduction of human scale. A rich composition of pavilions and small houses with public active functions connect the site and create attractive informal meeting places. A common meeting ground for both citizens, prominent guests, the staff of the ministries and offices at the site.

Two Forums for democracy

Just as The Village is designed for people to meet and interact, the ministry offices are designed to encourage co-working and knowledge sharing across the organizations. The vision is to sculpt two friendly compact buildings each with a great indoor forum designed to enhance connectivity and synergy across departments. Both with a dynamic and open architecture inviting people in from many directions.

The City Forum is a sculpture formed to complete the south-east corner of the site housing the Phase I offices and The River Forum is sculptured to complete the north-west corner of the site housing Phase II, G12 offices.

The two new office buildings - The City Forum and The River Forum are seven stories high and marks the main entrance to the site for pedestrians and cyclists from Lukiškių Street and The Neris River. The two new buildings are carefully inscribed in the architecture of the cityscape and create two great indoor meeting spaces as the centerpoint for the Lithuanian democracy.

The architectural designs of The City Forum and The River Forum are dynamic, organic and friendly and the facade is divided into three parts based on classic architecture. One - the open public ground floor invites people in - The Village is an integrated part of the flow and life in the office buildings enhancing the open vision for the ministries. Two - the main part of the facade has four stories creating a harmonious relationship with the existing buildings at the site. Three - the sculptural crown of the building with two floors towards the sky. The sloping roof of the crown gives an elegant and sculptural finish marking the entrances as a special focus point for the flow of people in the suburb of Lukiškes.

The masterplan for the Village

The Village is designed with the highest level of sustainable responsibility for the future. The surroundings, spaces and buildings we create today must form the framework for our community for many years to come. Therefore, it is our responsibility to take care of the social and sustainable aspects of construction through material use and innovative technical solutions. Our aim is always to minimize the total carbon footprint and to maximize the use of upcycled and durable solutions and materials.

We work with an integrated holistic design approach where architecture is detailed with high degree for integration with the main construction, the technical solution and smart solutions. In general The Village is designed with the use of strong natural materials with a long lifespan and high durability.

The human scaled composition of houses and pavilions on a unifying poetic pavement in an lush green environment creates spaces and places. This is the core element of the masterplan for The Village of Ministries.

The masterplan for The village of ministries also includes possibilities for the future. It is possible for The Village to expand in the coming times, and a forum more next to The City Forum.

The unifying rich pavement is designed as a common ground for both new and existing buildings weaving past, present and future together. The pavement creates strong connections to the river, Lukiškių kalėjimas 2.0 and Lukiškės Square. The Village connects the city and river and invites everybody to visit and participate.

The Pavement is adaptive and flexible with a square format of concrete tiles, soft green areas, small gardens and on-site cast large format pavements. The pavement is designed to gradually adapt and transform to the different conditions, demands and geometries on the site. It is a modular system adaptable in size creating a rich hierarchy of spaces and connections as well as adapts seamlessly to the many directions of buildings and flows at the site.

From Lukiškių Street large format pavement and the gentle retreating of The City Forum invite you inside the Village. Here pavilions with open active functions create a living Village Square. An interactive chargeable water element creates a playful and youthful addition to the square when it's not used for temporary workshops and events. The pavement and the position of the village's houses lead you through the site towards the river and through The Forest and Riverfront by The Village Path. The Forest with the existing trees becomes a lush green urban space in the center of the site. And the Riverfront, a representative arrival square seen from A. Goštauto Street.

The houses of the Village

The houses of the village are designed as a flexible modular system prepared to support commercial and public functions such as cafés, restaurants, shops, workshops, learning and meeting spaces, daycare etc. They could even house a small museum for the history of the site with the important histories of the Tatar cemetery or the mosque.

The multitude of possibilities of functions and flexible usage of the village's houses, without office security issues, provides unlimited possibilities for urban life and events at the site. The village can be an open active common ground for city life 24/7.

The houses along the riverfront can support both the offices in the existing buildings and the new. They can be designed as flexible additions and extensions to the existing buildings introducing an open inviting ground floor enhancing the human scale and city life. The additions and extensions can transform the existing buildings into new unique ministries with an open inviting expression connecting the indoor and outdoor spaces.

Along the river the functionality and usage of the houses must be adapted to the risk of flooding. Here the houses can be constructed as floating structures, simple coverings or even temporary structures enhancing the outdoor life along the river.

Logistics and parking

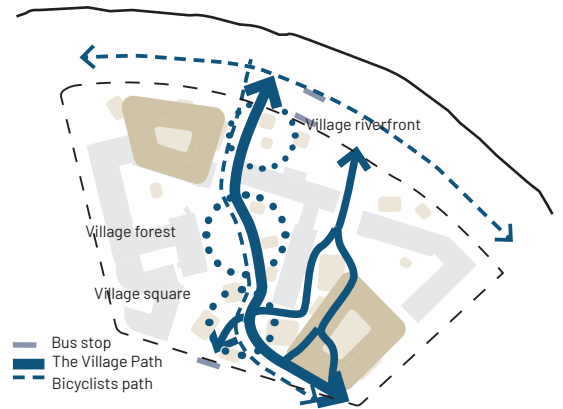
All the buildings have dedicated drop off and taxi zones. The building on G12 has access from Gynėly Street and exit on A. Goštauto Street. The buildings on G9 and G11 have access from A. Goštauto Street and exit by Mecetes Street. During construction of The City Forum 12 A. Goštauto Street uses the drop off zone as a roundabout to exit back to A. Goštauto Street.

Parking is primarily in basements under The City Forum and The River Forum. On street level parking is limited and could be preserved for short term parking, disability parking, taxi and possible car sharing arrangements.

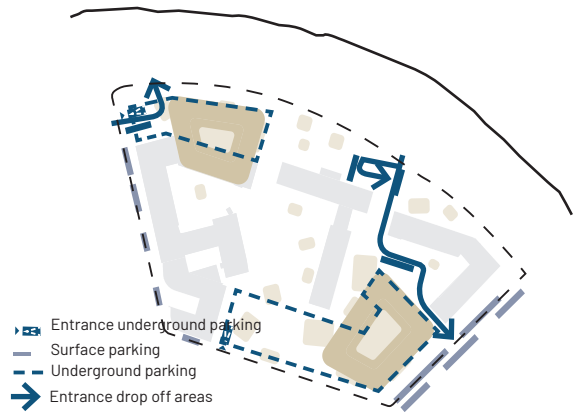
The green village

The Village is a green neighborhood saving as many existing trees as possible and reducing the amount of paved area. The pavement in streets and paths is limited to the minimum necessary for the functionality. The maximizing of green areas and biodiversity is part of the sustainable concept, with cosy gardens, rich diverse green plants and rainwater plant beds handling surface rainwater in The Village. The rainwater plant beds will change character depending on the weather and season as a beautiful part of the green atmosphere in the Village.

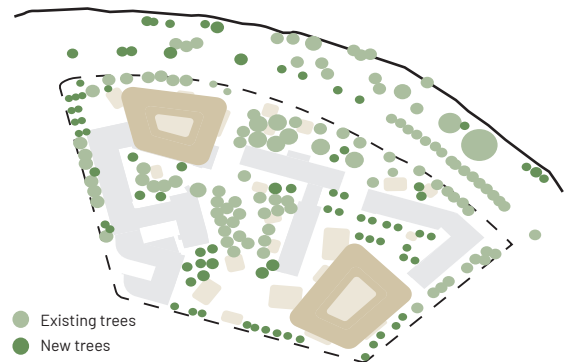
The transition between paved and green areas has endless possibilities for poetic rich variations of pavement and greenery. The pattern is modular pixelated patchwork where different variations of green planting are used along the main village path, the courtyards, riverfronts and streets. The differences create multiple atmospheres in the village creating a beautiful and biodiverse neighbourhood for all visitors.



The main pedestrian and cyclists connections through the site



Car parking and drop off areas for all buildings



New and existing trees

The two forums for democracy

The City Forum and The River Forum are designed according to the same principles in layout and appearance. The idea is to create a recognizable architectural identity on the site which already has buildings of varied architectural expressions. The other idea is to design robust modular simplicity and flexibility in the functionality and usage of the office spaces.

The forums are designed with rounded corners scaling down the buildings and giving them an inviting friendly expression. The buildings are designed as simple clear sculpture with dynamic design that gently absorbs the multiple directions on the site created by the existing buildings and connections. The River Forum overlaps and includes the existing building on G12. The idea is to have the opportunity to design an integrated office layout between ministries in the existing building and in the new.

From the outside the crown of The River Forum gently hovers over the existing building creating a unique interweaving of existing architecture and new. In all that we do, we always stand on the foundation of the past - this fact is also very true when we develop architecture, masterplans or even interior design. Transformation of existing buildings must reflect the new expectations of the present and to be ready for the future generations to come is a very important part of our sustainable strategy.

The River Forum is all about making a transformation with a high degree of reuse and upcycle in all scales. A transformation where the existing and new architecture is respectfully united into one strong forum with robust functionality and flexibility similar to The City Forum.

The existing construction of G12 can be reinforced with new columns inside or outside to support the overlapping new building. A new support system together with room high beams linking it structurally to other parts of the new building.

The ground floors of the Forums are mainly reserved for areas without security control especially towards the main public spaces around the buildings. Both buildings have multiple entrances and The houses of the village are freely positioned under the Forums uniting the border between inside and outside and creating interior streets and squares. The central square is an inviting indoor public arena. We call the space Agora inspired by the old Greek central squares - The birthplace of Democracy.

The City Forum

In The City Forum the main entrances are towards the corner of Lukiškių Street and Mecetas Street, the Village Square and from the drop off zone north of the building. The entrances are visible from all directions. The spaces between the houses create interior streets and the central Agora. At the Agora you find the information point and entrance to the secured areas. In the interior streets you find calm spaces and niches designed for co-working, small informal meetings, interview areas and cosy lounge areas.

The Houses have public functions such as conference center, learning functions towards Lukiškių Street making the visible for by passers possibly sparking an interest in the work of the government institutions. The Canteen is placed towards the Square and can be an integrated eating hall or event space in connection with events at the square.

Behind the security line you find the shared meeting spaces for the ministries. The Grand Hall is placed in a village house for a special architectural design with a representative expression.

From the Agora a beautiful stair and an atrium gives a spatial connection to the workspaces for the ministries above. The design of the connection makes it possible to have active and possible noisy events at the agora without affecting the workspaces.

The Workspaces

The ministries are placed around a unifying and community creating atrium as a covered Square for Ministries. The atrium and the layout of the workspaces are designed to create attractive places to work where you meet your colleagues, socialize in a calm and relaxed environment with great possibilities to co-working and having individual in-depth workspaces in a quiet space. The plan layout offers acoustic intelligent solutions for the open work environment which is much more than absorbing surfaces.

The office floors around the central atrium have the same depth and are designed as generic flexible office spaces. All office floors can be designed freely with as few as possible structural walls, fire escapes and toilet cores as limitations. This gives maximum freedom in organizing the ministries and designing the interior layout on short and long term. It also gives the opportunity to customise the individual ministries if desired.

A bridge crossing the atrium in the center by the elevator core and with a beautiful connecting stair creates a simple and robust access point to each office floor - The proven 8-figure office layout with direct and short connections. This minimizes time usage, by passing other workspaces and noise from walking.

At both ends of the bridge is a kitchen with eating and lounge facilities. This is the main social space for the offices. The central position by the vertical connections allow for all kinds of planned and unplanned meetings across the organization. Enhancing the co-working and knowledge sharing environment in the ministries.

The area for the minister and the team is placed close to the elevator core for easy access. There can freely be planned for a minister on each floor or for more ministers on a number of floors.

The bridge divides the office floor into two areas. The areas are organized as the layers of an onion. In the center around the atrium the most common and towards the facade the most private. In the center is a layer with meeting rooms and support functions. This layer can open to either side depending on the functionalities and desires. A number of connections towards the workspaces along the facade reduces the by passing of workspaces to a minimum. It's even possible to separate the areas of workspaces into isolated units for extra privacy or security.

The layout is designed for the best daylight conditions around the fixed workspaces by placing them along the facade. The length of the facade allows a minimum of 65% of the total workspaces to be placed here even when freeing the beautiful corners, kitchen lounges and an area for the ministry office. The layout shows a big portion of closed individual and group workspaces as part of the fixed workspace. An adjustment of these spaces can further increase the number of fixed workspaces if desired.

The flexible workspaces are placed in different locations on the office plans. Centrally around the atrium for flexible workspaces with a high mobility and a high degree of co-working and collaboration. The beautiful rounded corners with spectacular view over the surrounding area are designed for flexible workspaces with a higher degree of individual or small group work concentration. The kitchens with lounge areas can also supplement as flexible workspaces.

The roof is accessible for the staff as an outdoor space for breaks, meetings in the small roof pavilions or a walk-and-talk on the circular path enjoying the splendid view over the city and Neris River scape. The roof also is supplemented with a green roof and photovoltaic-cells.

The River Forum

The main entrances to The River Forum is from The Village Path and from the corner of A. Goštauto Street and Gynėlių Street. The Ground floor is as The City Forum designed with village houses creating interior streets and a public Agora in the centre which also serve as a covered square for the ministries.

The River Forum unites new and old. The new building with security gates and a new central elevator core creates universal access between new and old for an integrated work environment between the two buildings around the linking Agora. The close connectivity between the two makes the design of flexible and changeable ministries seamless.

As The City Forum the offices floors in The River Forum are designed as generic and flexible spaces and with the same principles regarding the layers of functions and the fixed workspaces towards the facade creating great light conditions.

Materials and sustainability

Lithuania is a big supplier of wood and it's a big part of the Lithuanian identity with around of the country covered by forest. Wood is also an important part in reducing the carbon footprint in our build environment. The use of wood can strongly link the identity of Lithuania with a carbon neutral future. The ministry quarter has the potential for showing the vision and identity of Lithuania for visiting foreign guests and representatives. It can be a brand and destination for how Lithuania can contribute in a local and global context. The village will therefore be a neighbourhood constructed by wood to the largest possible extent.

The Village Houses are 100% wooden constructions with wooden cladding on closed partitions. Roofs are all functional as green roofs, photovoltaic-cell energy production or accessible to use as roof terraces. Roofwater is collected to use as irrigation at the site.

The vision for The Forums is a timber construction possibly supplemented with steel and concrete structures. The interiors will have wooden cladding to a large extent, creating a warm northern atmosphere and linking the interior architecture to the wooden character of the village. Wood is the primary material from landscape to interior architecture.

The balcony fronts around the atrium and the walls of cores with meeting room and support functions are clad with wood. They continue the identity of the village into the workspaces. The atrium is surrounded by a village of cores. In the centre of the atrium the spectacular main stair and a unique flexible workspace are surrounded by unique greenery spanning from bottom to top of the atrium creating two green lungs. The green lungs will apart from creating a unique character also enhance the air quality and acoustics of the build.

The facade cladding on the Forum buildings are light sand-coloured bricks creating a visual harmony between the wooden houses and the existing facades. The facades are structured by a modular system with a width of 2.400 mm matching the flexibility of the workspace.

An asymmetrical angled closed partition creates a beautiful dynamic facade. From the corners the two different sides of the same facade element are visible at the same time giving the architecture a dynamic and beautiful play of light and shadows. The design scales down the facade and gradually changes the building's appearance as you move around it. The closed partitions can be adjusted to optimise the amount of facade glass for minimising interior cooling demands improving the buildings energy efficiency. The partitions can even vary depending on facade direction for further optimization of energy usage and daylight conditions at the workspaces.

Another important factor in reducing the carbon footprint is transformation and reuse of existing materials and structures. The transformation and renovation of the existing buildings plays very well into this agenda. The buildings listed for demolition could be analysed for possible reuse of the materials in this project or in other places. The concrete structure could for instance be crushed and reused in new concrete foundations, basements and structures or in the concrete pavements. The windows could likewise be used as glass facades on some of the small village houses where isolation demands could be lower. They could also be crushed and added to concrete flooring or pavement as beautiful glass-terrazzo on the floors in the Agoras. Many more options and possibilities could be investigated.

The inviting and inclusive atmosphere of The Village in combination with strong sustainable visions through the use of wood and possibly reuse of existing materials will create a unique ministry quarter showing the future of Lithuania with respect for the past. A new destination transforming Lukiškes into a living neighbourhood between the old city and the new city.

Area scheme

Land plot		
Development intensity	2,4	
Development density	51%	
Phase 1		
Building, City Forum		
Number of floors	7	
Building height	30,5 - 34,5 m	
Built-up area above ground	4.014	sqm
Gross floor area above ground	21.329	sqm
Surface Volume	107.724	m3
Build-up area underground	6.819	sqm
Gross floor area underground	13.638	sqm
Underground Volume	92.057	m3
Phase 1		
The village Houses		
Number of houses	9	
Number of floors	1	
Building height	4,5 m	
Built-up area above ground	873	sqm
Gross floor area above ground	873	sqm
Surface Volume	3.929	m3
Phase 1		
Total		
Built-up area above ground	4.887	sqm
Gross floor area above ground	22.202	sqm
Surface Volume	111.653	m3
Build-up area underground	13.638	sqm
Underground Volume	92.057	m3
Parking spaces		
Parking, Phase 1	488	
Parking, Phase 2	140	
Parking, Surface	35	
Parking, Total	663	
Spaces, Phase 1		
Common area	800	sqm
Synergistic commercial functions	3.302	sqm ****
Spaces without access control	4.102	sqm
Meeting and co-working	1.030	sqm
Offices of the ministers and their teams	714	sqm
Workspaces for ministerial staff	13.646	sqm
Functional backroom spaces	3.012	sqm
Spaces with access control	18.402	sqm
Phase 2 - G9		
Existing building		
Volume and area as existing	8.785	sqm
Phase 2 - G9		
The village Houses		
Number of houses	3	
Number of floors	1	
Building height	4,5 m	
Built-up area above ground	215	sqm *
Gross floor area above ground	350	sqm *
Surface Volume	1.575	m3
Phase 2 - G9		
Total		
Gross floor area	9.135	sqm ***
Phase 2 - G12		
Existing building		
Volume and area as existing	11.900	sqm
Phase 2 - G12		
Building, River Forum		
Number of floors	7	
Building height	30,5 - 34,5 m	
Built-up area above ground	1.979	sqm
Gross floor area above ground	12.929	sqm
Surface Volume	69.208	m3 **
Build-up area underground	2.538	sqm
Gross floor area underground	5.076	sqm
Underground Volume	34.263	m3
Phase 2 - G12		
The village Houses		
Number of houses	1	
Number of floors	1	
Building height	4,5 m	
Built-up area above ground	65	sqm
Gross floor area above ground	65	sqm
Surface Volume	293	m3
Phase 2 - G12		
Total		
Gross floor area	24.829	sqm ***
Notes:		
* One house build on top of existing G9 building		
** Without existing volume of G12		
*** Part of area in basement of existing building		
**** Commercial premises placed in The Village Houses		