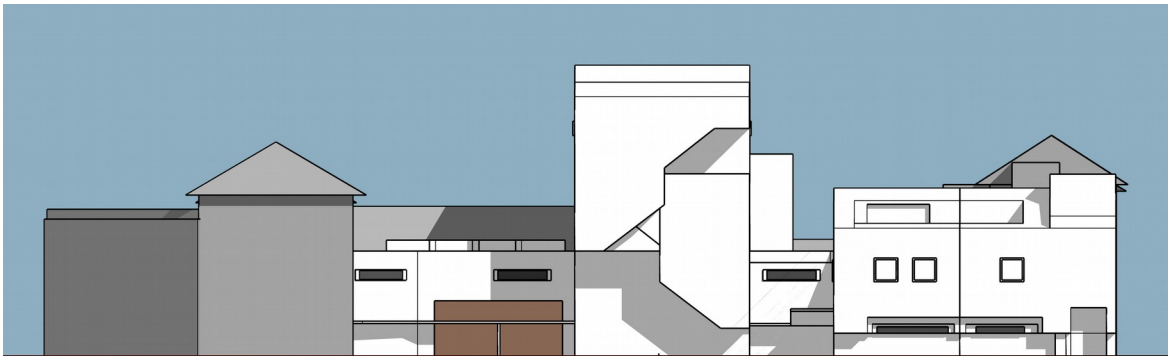


# Vilnius Visual Arts Museum

## Proposal description

### Remembrance by making interior

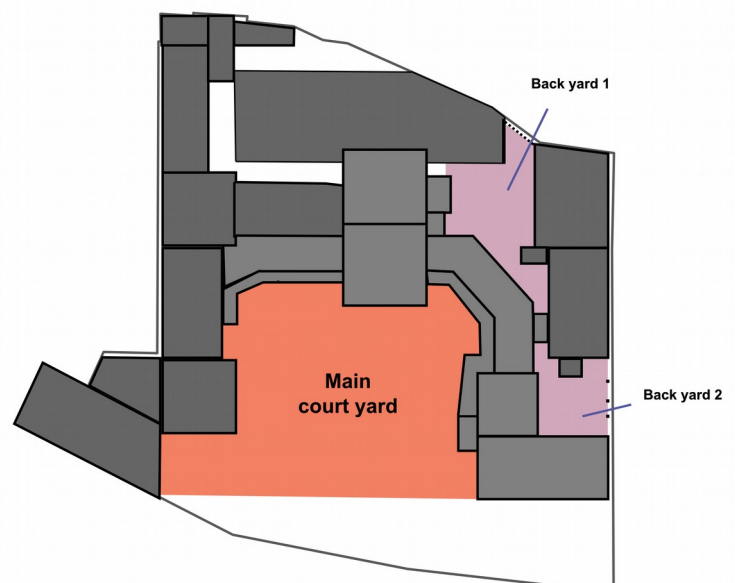
The captivating deteriorated facade of building 4 is – in our opinion – lost if renovated. Thus, in this proposal it is converted into an interior facade, only lightly preserved and kept as-is, to become a part of the museum exhibition as a remembrance of the deep history of the palace architecture.



Museum main entrance

### Yards and backyards

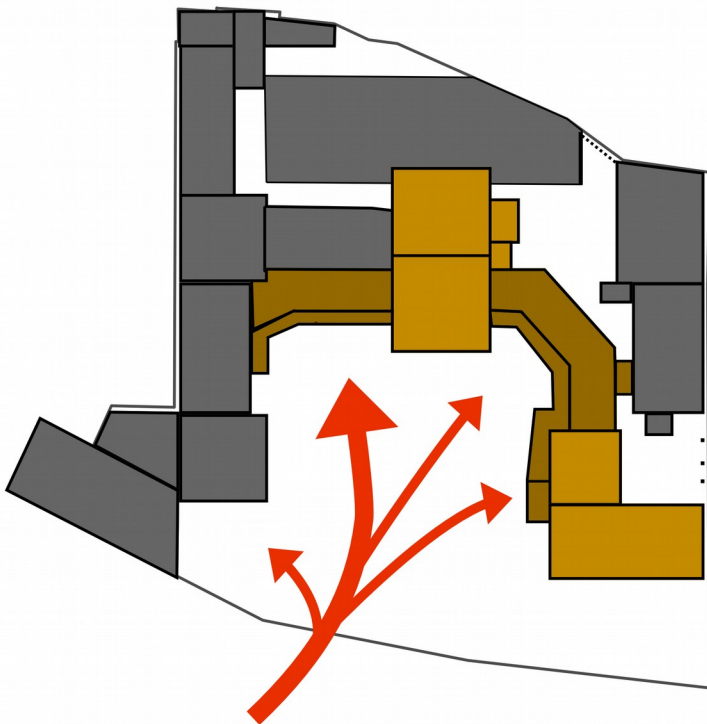
Creating a successful yard requires a thoughtful planning of its necessary counterpart – the backyard. Only by making room for secondary activities behind the scenes, a presentable and comprehensible outdoor space in front of the museum can be achieved.



## A powerful central volume

We believe that only a very large and powerful central volume has the authority to properly reestablish and control the wished-for U-shape.

Our particular design suggests a large central volume placed at the exact location of the former Eastern Pavilion. This volume shall contain the multi-hall / concert hall. The staircase accesses are placed in front of the volume with a dynamic, sculptural effect, at the same time enforcing and defying the central mirror line.



## A lively city plaza

With the yards properly designed and the symmetrical / asymmetrical main volume in place, the careful planning of something which would become a lively and active city plaza can begin. All along the facades facing the central courtyard apertures are installed, advancing ways of entering and engaging with the buildings. A variety of smaller shops, book stores and cafes are to be opened towards the square promoting general mercantile activity and a multiplicity of cultural experiences.

The entries are protected by a cantilevered roof further underlining the U-shape and providing a shelter in heavy weather conditions.

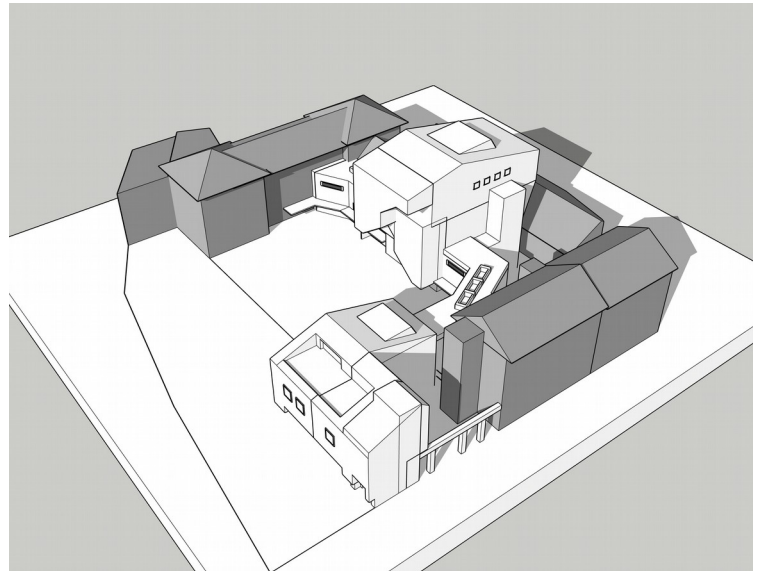
## No cars underground

We believe it is unnatural for this site to be forced to take in cars underground. The construction site simply does not have the capacity for such an endeavor, and the feel of solidity and tranquility in the local area would be jeopardized. Also, it may disturb foundations and harm not yet excavated archaeological values.

On the other hand, we propose a basement beneath most of the new additions with both manual and lift access to make room for storage facilities for both museum, cafes and shops.

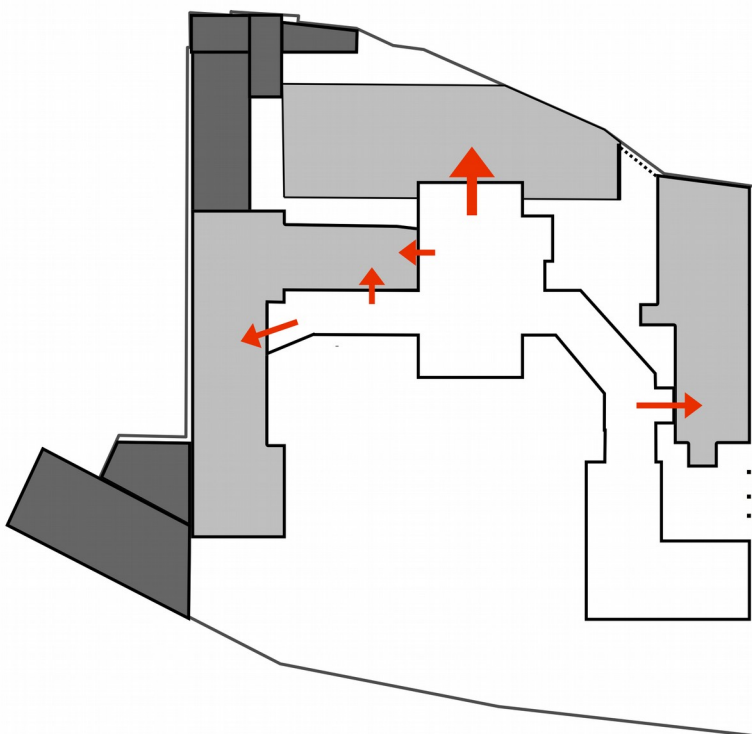
## Transgressing Zone A

In the competition brief, there's a clear division between zone A and B referring to the site of the museum and the public land, respectively. We acknowledge the overall logic of having these two zones, but find the actual line drawn between the zones too schematic and too limiting for invigorating the inner courtyard - and, especially - for creating a proper architectural completion of the Southern Wing of the museum, i.e. 1B3p and the site of the former Southern Pavilion.



Here, we propose to extend the arm going from the central volume along the northern facade of building 1B3p all the way to and partially across the drawn line between zone A and B. We want to let this structure go all the way around the gable of building 1B3p, thus firmly establishing a new, more inviting facade towards the public land and Vilniaus G.

This transgression of zone A will not only organize the corner between Leiejyklos G. and Vilniaus G., but also more clearly define the area of the inner courtyard, make it more legible, and enhance the feeling of safety within it.



## Easy accesses to the existing museum wings

Both northern and southern wings are easily accessed from the new addition. Also, the former sports hall is reactivated, and integrated through access along the central mirror line, directly from the visitor terminal.

Building 4, aka upper eastern wing, could be adapted as office spaces for staff and head of museum, with easy access to visitor terminal and main entry hall.

## Flow of incoming artworks

We respect the high priority of care for incoming artworks. By virtue of careful planning, 2 major motorized lifts and basement adaptation, incoming larger artworks and design artefacts are easily moved, stored and placed in every part of the new addition.

