

9	1	B	2	T	8
---	---	---	---	---	---

Jonušas Radvila Palace Art Museum

- EXPLANATORY NOTE -

TABLE OF CONTENTS

DESIGN AGENDA

Design Description	01
Concept Model - Landscape of Voids	02
Concept Model - Archaeological Underground	03

CIRCULATION DIAGRAM

Site Plan	04
Precint Plan	05

PROGRAM DIAGRAM

Lower Underground Floor Plan	06
Upper Underground Floor Plan	07
Ground Floor Plan	08
First Floor Plan	09
Second Floor Plan	10
Axonometric Diagram	11
Area Chart	12

Voids Collage

The construction of the Vilnius Jonušas Radvila Palace originated its inception in the 16th century. Over the course of five tumultuous centuries, it had progressed through various phases of constructions and restorations, as well as undergone the destruction of war. Periods of the reconstruction took place at different historical time, consequently, resulted different structural system on each construction.

1. *Collage of History*

At present in the 21st century, the Palace is no longer the image of that was once envisioned in the beginning, for it had evolved into a set of historical collage. The proposal acknowledges this existing condition and at the same time seeks to interconnect the incongruent pavilions into a cohesive art institution as a whole.

Two new pavilions are introduced to complement the historical collage of the Palace. These simple volumes demonstrate contemporary concrete engineering and abstract in appearance. One pavilion on the east facilitates as a circulation connector on vertical movement, as well as connecting the two different floor levels of the adjacent northern and southern pavilions. The other pavilion is at the southwest corner, an art public volume that will balance the overall formation of the Palace and enclose the shape of the central courtyard.

2. *Landscape of Voids*

One space that remains absent of mediation throughout the passage of history may be the central courtyard, and the proposal seeks to narrate this silent mythical quality as the basis of the concept. A process of assembling a series of organic voids together the existing trees was undertaken to attain an abstract coexistence. The result is a curious landscape that embodies both the fundamentals of an art institution and also the elements of nature.

On ground level, the formation of voids suggests an archaeological presence beneath. It also generates a series of discreet cultural atmosphere, yet at the same time, modestly separates and navigates the logistic vehicle route. The uniform ground blends and unifies the disparate historical collage of the palace along the art plaza at the front. On underground level, it reveals a curatorial blueprint of a museum and integrated tree root system. As daylight filters down through each of the void skylights of the underground chambers, the transcendent connection towards the palace and the nature above comes to light.

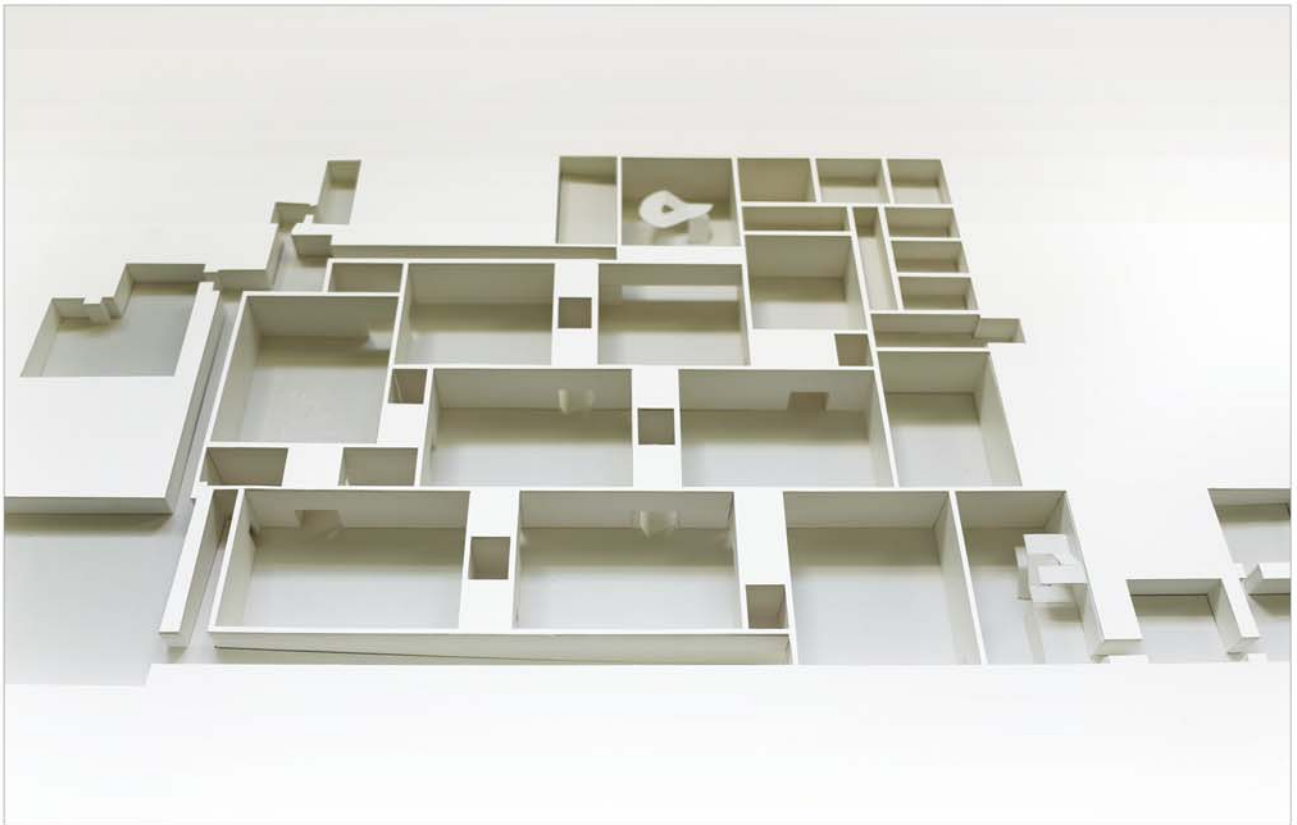


The landscape generates intimate cultural atmosphere, yet modestly separates and navigates the logistic vehicle route

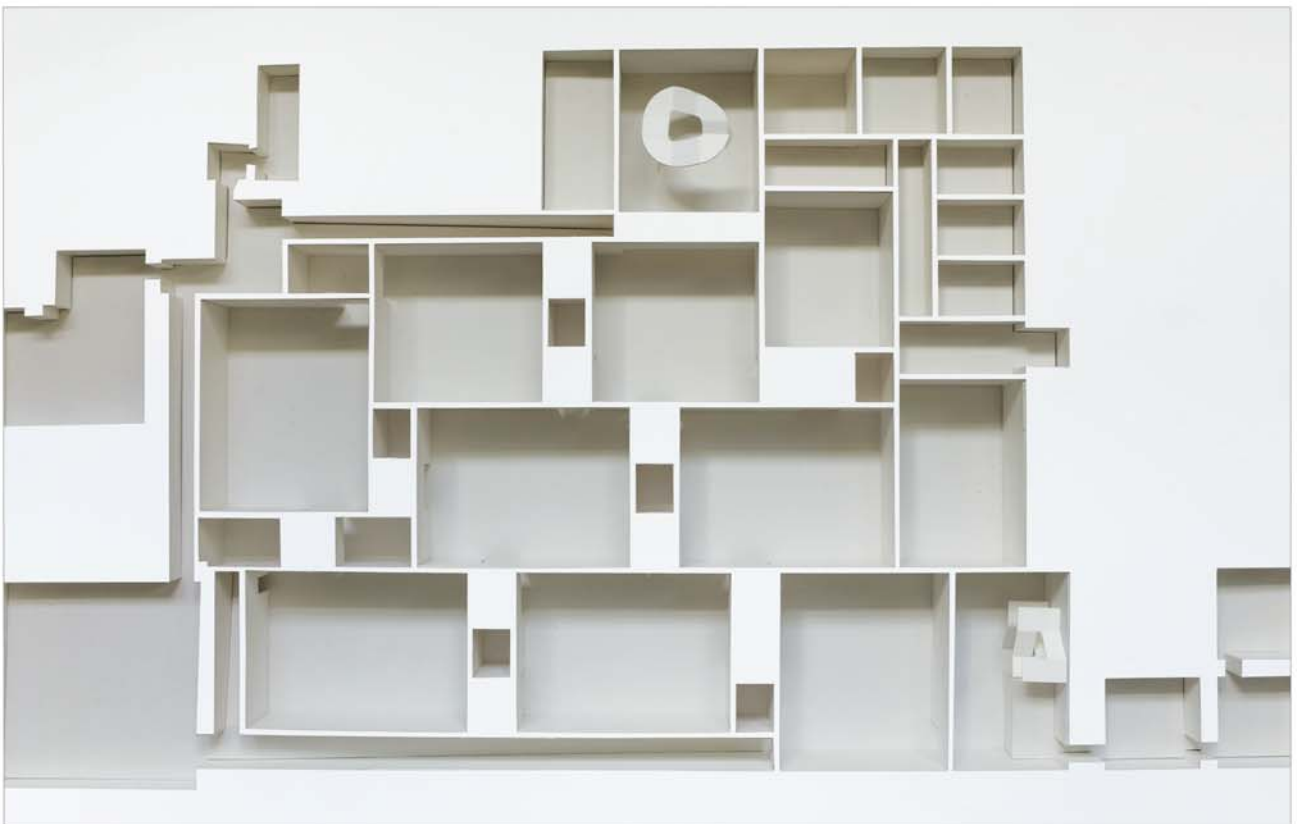


Organic voids and the existing trees are deliberately arranged together in an abstract coexistence

CONCEPT MODEL | Landscape of Voids

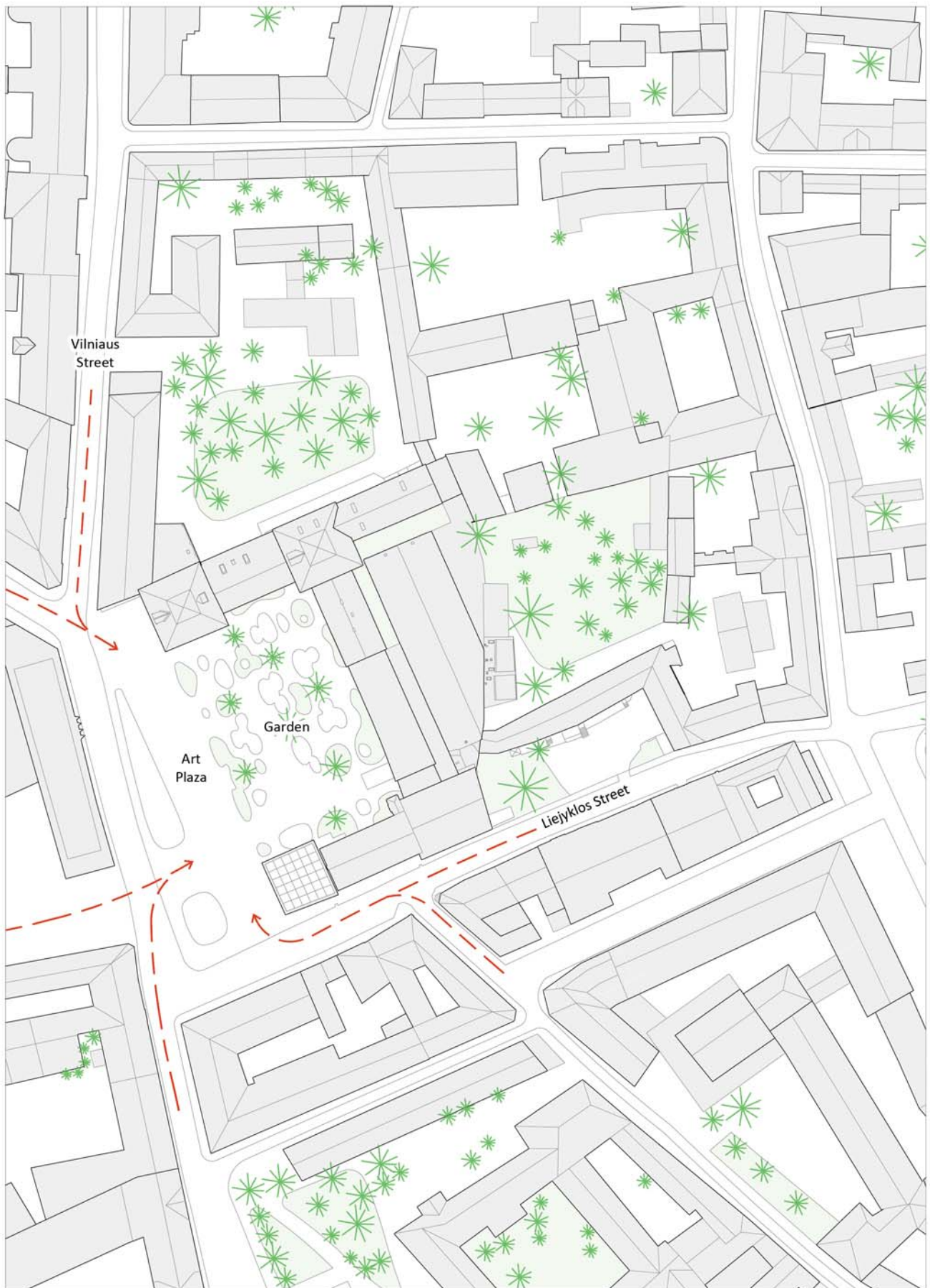


Beneath the landscape of voids, the underground reveals a curatorial blueprint of a museum and tree root system



The new underground chambers connect the surrounding archaeological galleries as a whole

CONCEPT MODEL | Achaelological Underground

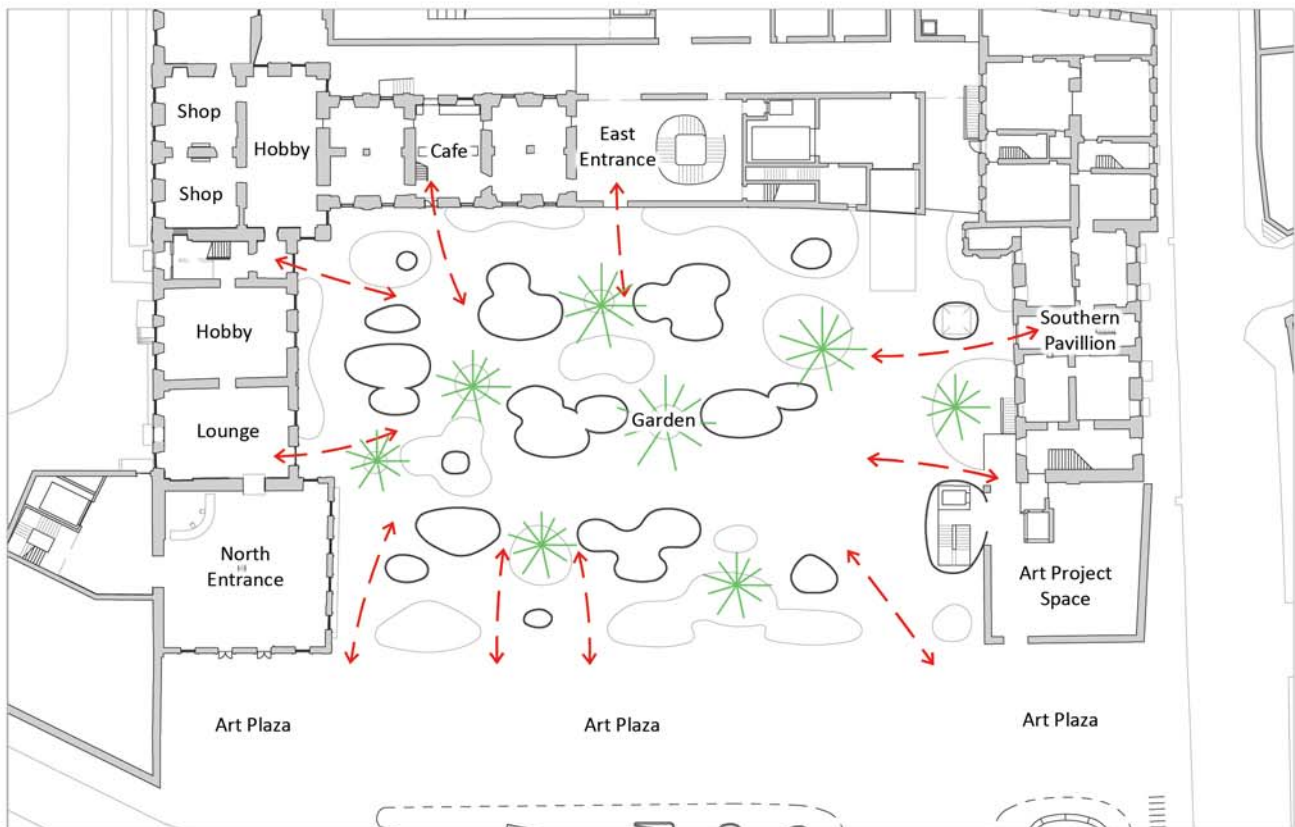


The diagram shows the Art Plaza and Garden as a potential public space in the neighborhood

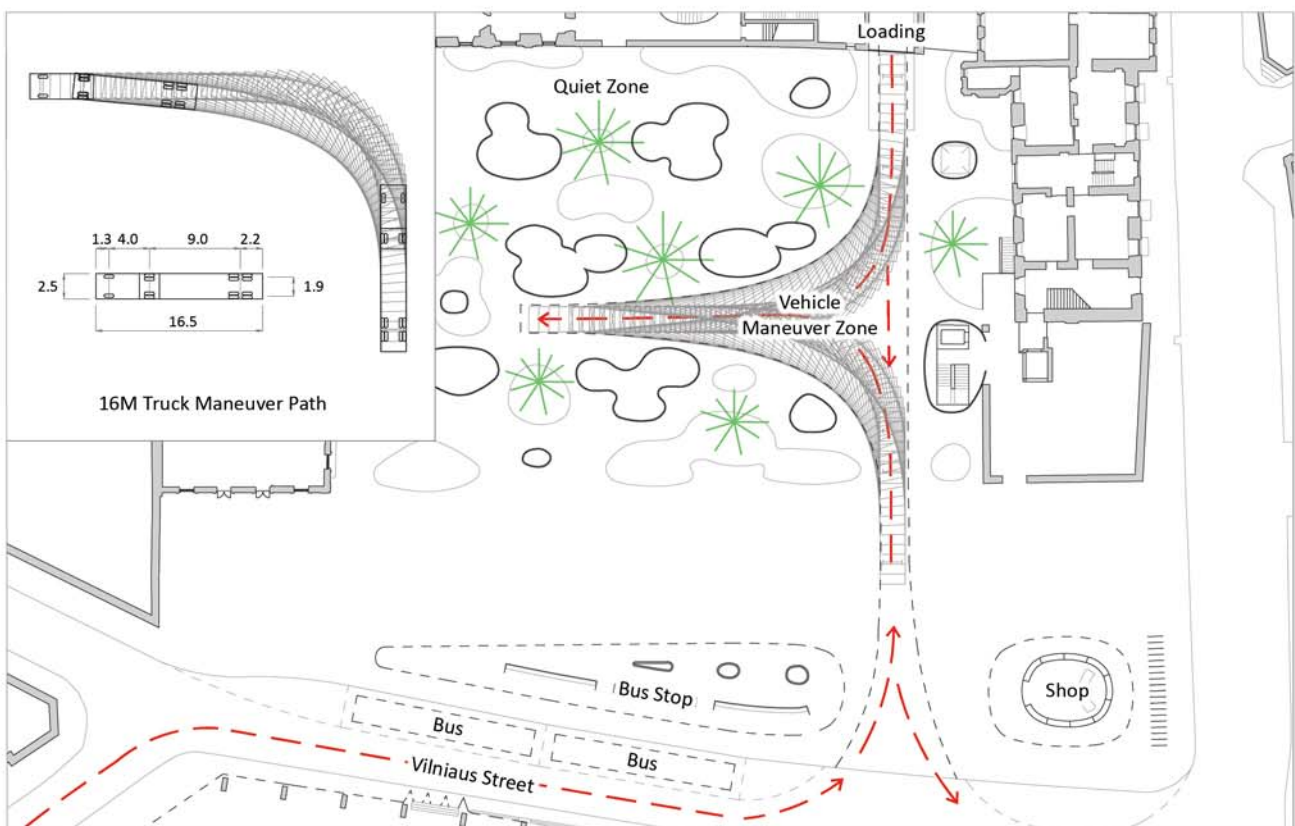
0 20M 40M



CIRCULATION DIAGRAM | Site Plan 1/1500

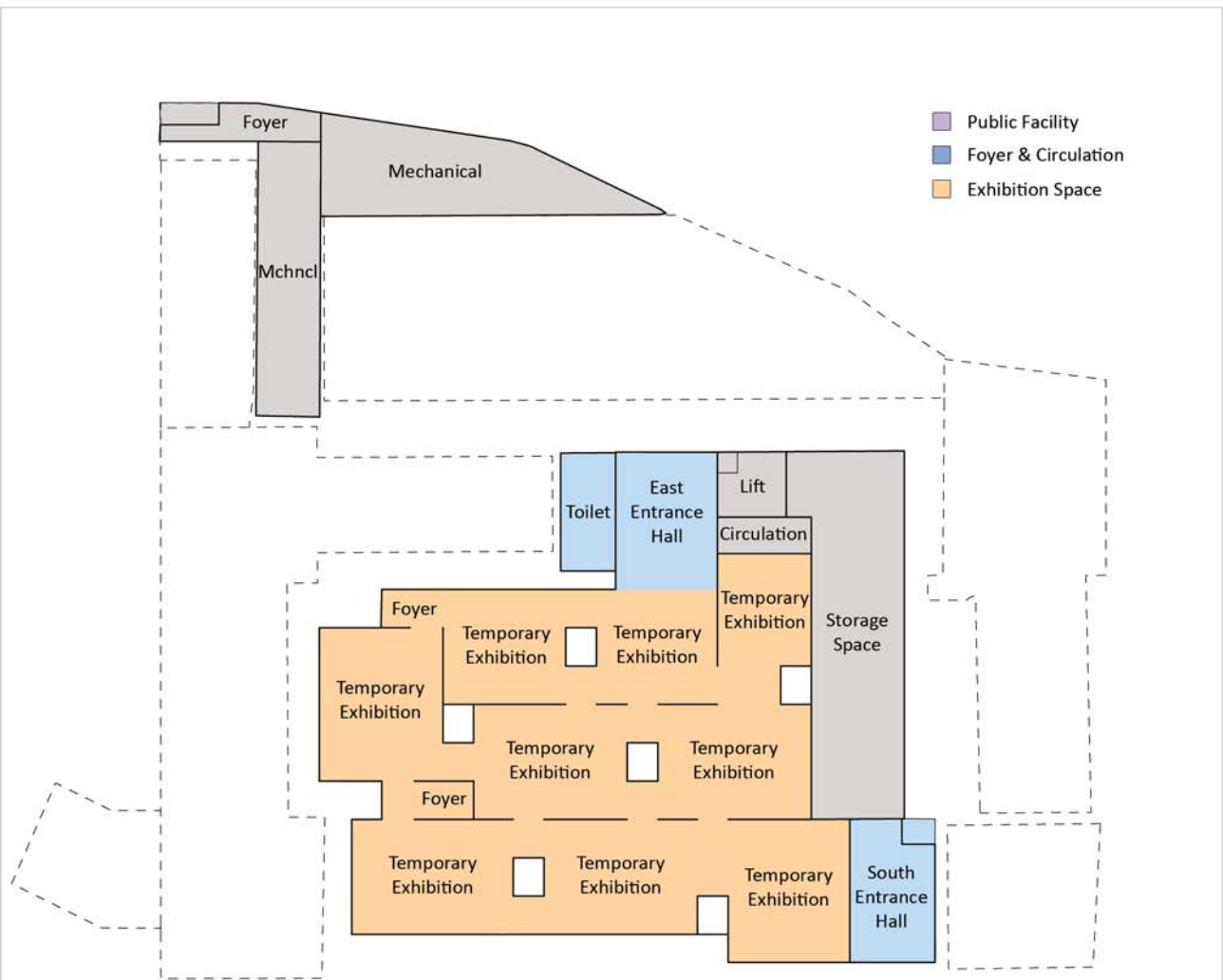


The garden is central to the overall planning, a neutral medium that unifies the various public programs surrounding it



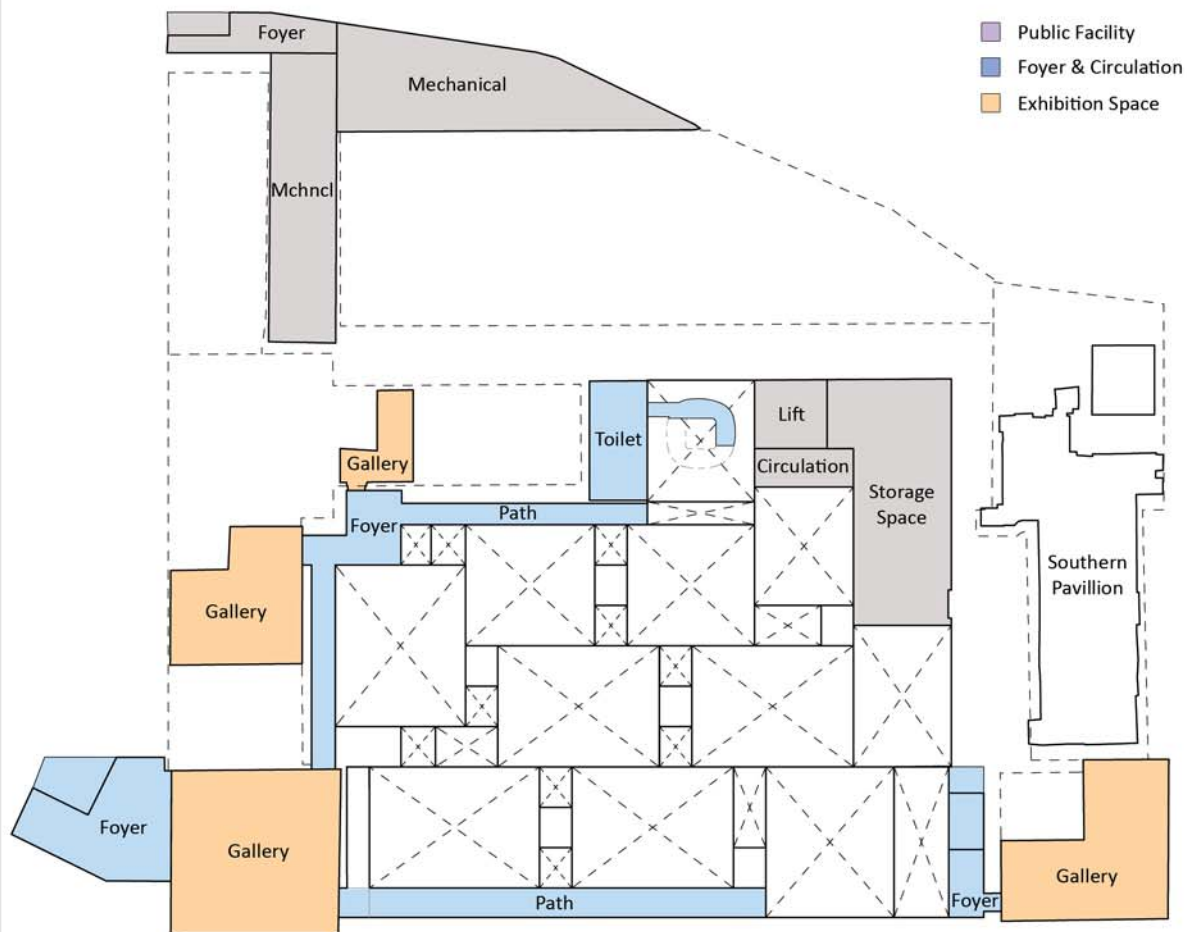
The diagrams shows a 16M truck maneuver path during loading/unloading sequence





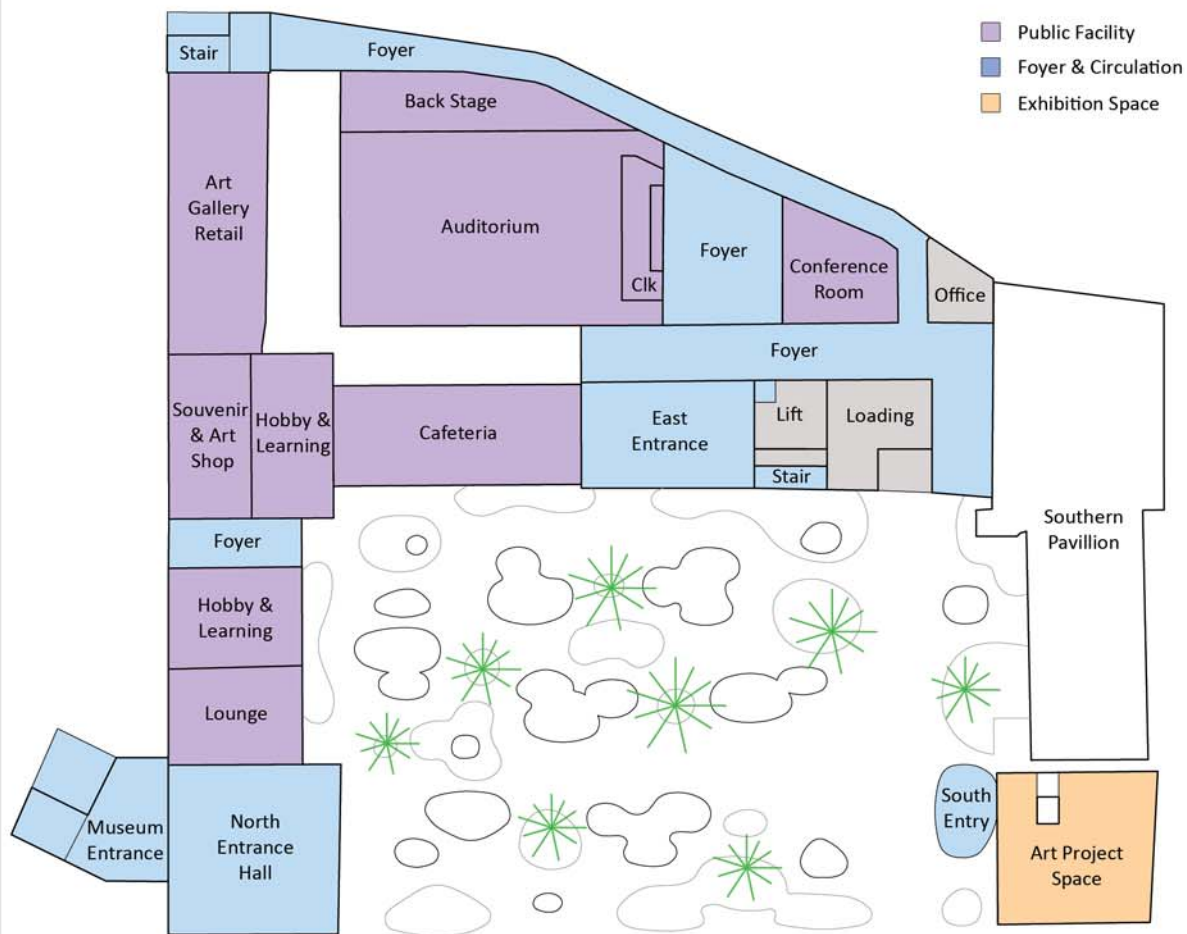
The temporary exhibition spaces and the storage space are connected on the same level

I. Existing Building Area	II. New Building Area	
-	1 Temporary Exhibition	1593.4 m ²
	2 Entrance Hall	319.5 m ²
	3 Foyer & Circulation	378.7m ²
	4 Toilet	70.4 m ²
	5 Storage Space	389.5 m ²
	6 Mechanical	439.3 m ²
-	Total New Area	3190.8 m ²
TOTAL AREA	3190.8 m ²	



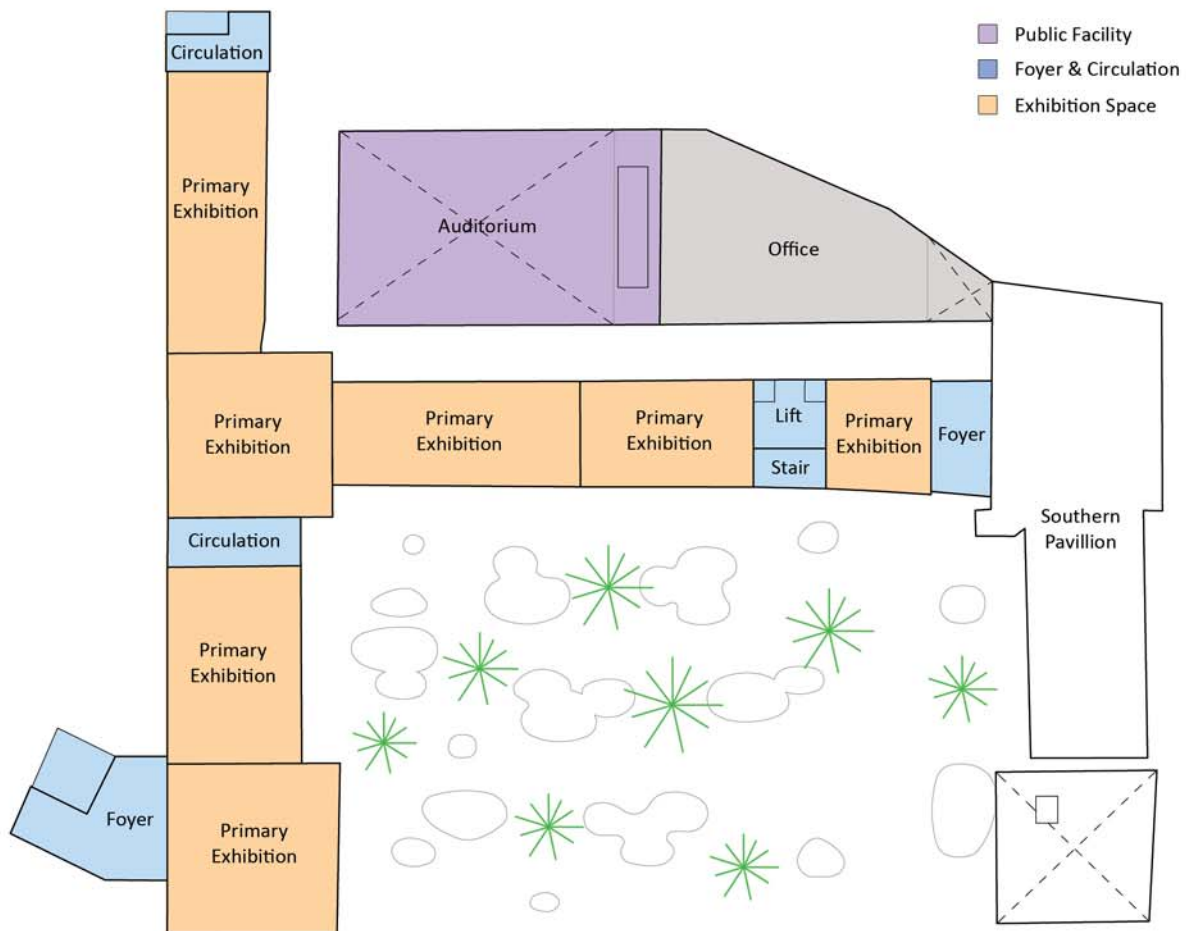
On the upper underground level, the circulation system connects all the surrounding underground galleries

I. Existing Building Area		II. New Building Area	
1 Underground Gallery	667.3 m ²	2 Foyer & Circulation	609.7 m ²
		3 Toilet	67.5 m ²
		4 Storage Space	290.2 m ²
		5 Mechanical Space	439.3 m ²
Total Existing Area	667.3 m ²	Total New Area	1406.7 m ²
TOTAL AREA		2074.0 m ²	



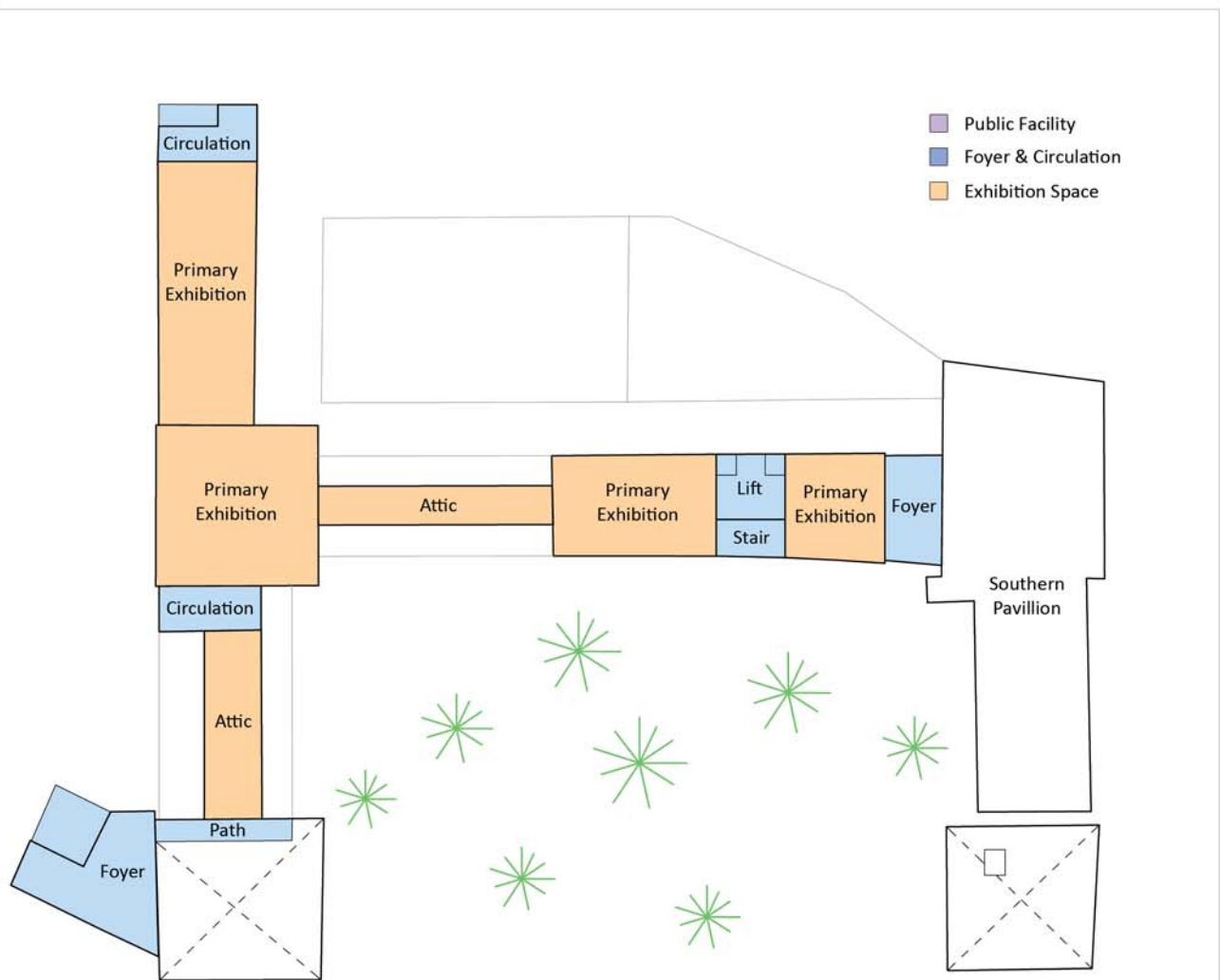
The ground floor plan is an open public facility and the garden unifies the various programs

I. Existing Building Area		II. New Building Area	
1 North Entrance Hall	284.8 m ²	11 East Entrance	171.2 m ²
2 Museum Entrance	122.5 m ²	12 Loading/ Unloading	93.2 m ²
3 Lounge	128.0 m ²	13 Auditorium (Backstage)	134.5 m ²
4 Hobby & Learning Zone	263.3 m ²	14 Circulation & Foyer	520.7 m ²
5 Souvenir & Art Shop	132.8 m ²	16 Art Project Space	232.0 m ²
6 Cafeteria	243.5 m ²	17 South Entry	47.1 m ²
Cafeteria (Upper floor)	243.5 m ²		
7 Art Gallery Retail	271.4 m ²		
8 Auditorium	578.4 m ²		
9 Cloak	46.3 m ²		
10 Conference Room	115.6 m ²		
11 Office entrance	42.5 m ²		
12 Circulation & Foyer	347.1 m ²		
Total Existing Area	2819.8 m ²	Total New Area	1198.7 m ²
TOTAL AREA		4018.5 m ²	



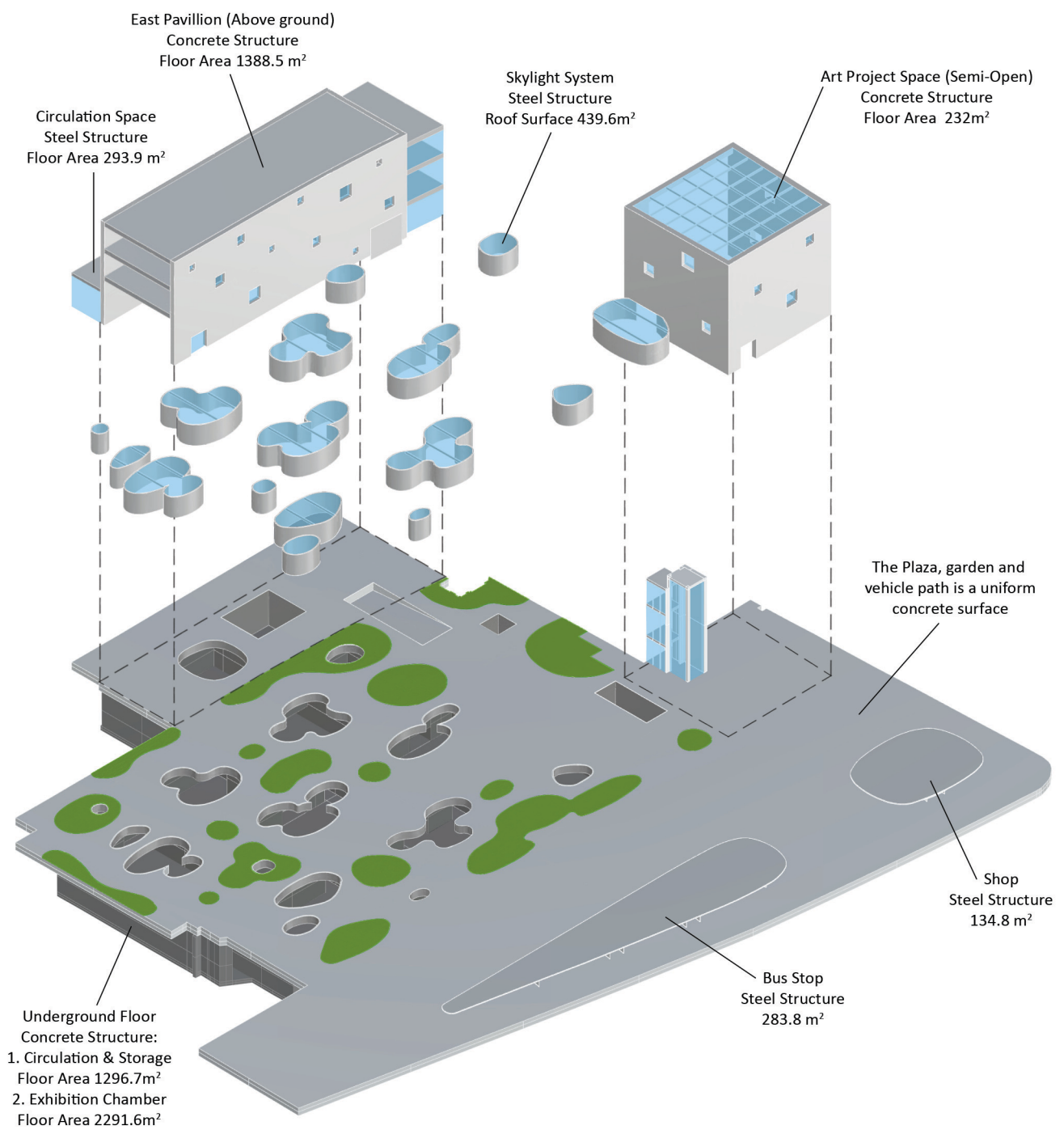
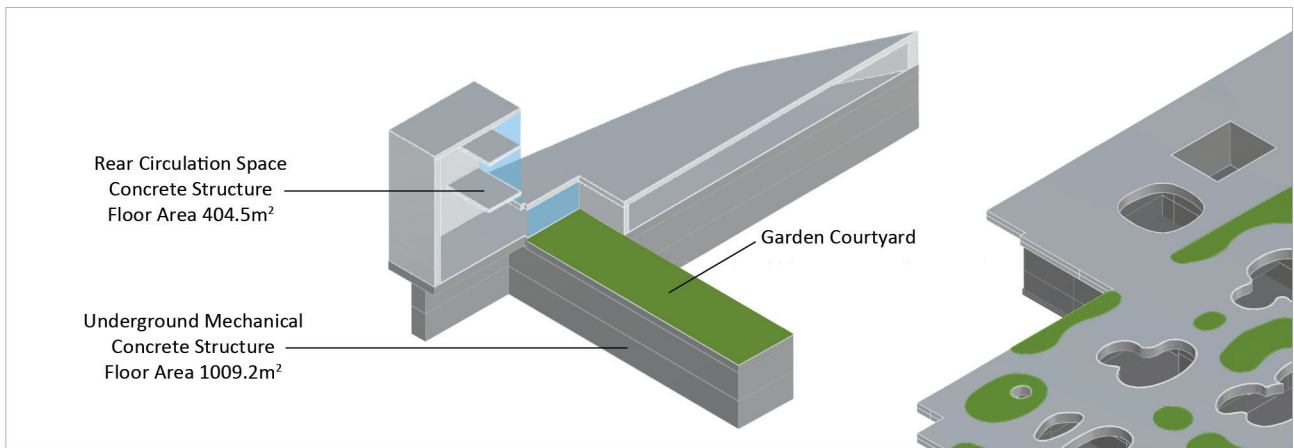
The first floor plan is a primary exhibition space, with the possibility to connect to the southern pavillion

I. Existing Building Area		II. New Building Area	
1 Primary Exhibition	1397.9 m ²	5 Primary Exhibition	296.1 m ²
2 Foyer & Circulation	233.4 m ²	6 Foyer & Circulation	150.8 m ²
3 Auditorium (Upper Floor)	46.2 m ²		
Auditorium (Control Room)	35.2 m ²		
4 Office	399.0 m ²		
Total Existing Area		Total New Area	446.9 m ²
TOTAL AREA		2558.6 m ²	



The second floor plan is a primary exhibition space, with the possibility to connect to the southern pavillion

I. Existing Building Area		II. New Building Area	
1 Primary Exhibition	562.4 m ²	5 Primary Exhibition	296.1 m ²
2 Attic Gallery	217.2 m ²	6 Foyer & Circulation	150.8 m ²
3 Foyer & Circulation	212.6 m ²		
Total Existing Area		Total New Area	446.9 m ²
TOTAL AREA		1439.1 m ²	



AXONOMETRIC VIEW | Structural System

Space	I. Existing Building		II. New Building		III. Existing & New	
	Area (m ²)	Ratio (%)	Area (m ²)	Ratio (%)	Area (m ²)	Ratio (%)
Exhibition Area	2177,5	16,7	2185,6	16,7	4363,1	33,4
Primary Exhibition	1960,3	15,0	592,2	4,5	2552,5	19,6
Attic Gallery	217,2	1,7	-	-	217,2	1,7
Temporary Exhibition	-	-	1593,4	12,2	1593,4	12,2
Storage Area	0,0	0,0	809,9	6,2	809,9	6,2
Off-loading Area	-	-	93,2	0,7	93,2	0,7
Reception	-	-	130,0	1,0	130,0	1,0
Packing	-	-	49,5	0,4	49,5	0,4
Storage	-	-	88,3	0,7	88,3	0,7
Preparation room	-	-	135,4	1,0	135,4	1,0
Preservation	-	-	30,3	0,2	30,3	0,2
Workshop	-	-	30,3	0,2	30,3	0,2
Office	-	-	40,8	0,3	40,8	0,3
Warehouse	-	-	30,3	0,2	30,3	0,2
Circulation	-	-	181,8	1,4	181,8	1,4
Education Area	1014,9	7,8	134,5	1,0	1149,4	8,8
Auditorium	636,0	4,9	134,5	1,0	770,5	5,9
Learning & Hobby Zone	263,3	2,0	-	-	263,3	2,0
Conference Room	115,6	0,9	-	-	115,6	0,9
Office	440,5	3,4	0,0	0,0	440,5	3,4
Office Area	191,0	1,5	-	-	191,0	1,5
Conference room	47,5	0,4	-	-	47,5	0,4
Document storage	32,6	0,2	-	-	32,6	0,2
Toilet & Locker	42,6	0,3	-	-	42,6	0,3
Circulation & Pantry	126,8	1,0	-	-	126,8	1,0
Public Area	2886,5	22,1	2445,1	18,7	5331,6	40,8
Project Space (Outdoor)	-	-	232,0	1,8	232,0	1,8
Foyer & Circulation	1328,0	10,2	2297,2	17,6	3625,2	27,8
Cafeteria	243,5	1,9	-	-	243,5	1,9
Cafeteria (Lounge)	243,5	1,9	-	-	243,5	1,9
Souvenir Shop	132,8	1,0	-	-	132,8	1,0
Art Gallery Retail	271,4	2,1	10,0	0,1	271,4	2,1
Underground Gallery	667,3	5,1	-	-	667,3	5,1
Toilet	-	-	137,9	1,1	137,9	1,1
Mechanical	0,0	0,0	958,6	7,3	958,6	7,3
Machine room	-	-	439,3	3,4	439,3	3,4
Ventilation room	-	-	439,3	3,4	439,3	3,4
Computer room	-	-	80,0	0,6	80,0	0,6
Total Area	6519,4	49,9	6533,7	50,1	13053,1	100,0

AREA CHART